

Barbison

CLEANROOM SYSTEM



CONTENTS

01

BERBSON GROUP	02
Berbson group	02
Berbson cleanroom	04
Development history	06
Global distribution	08
Qualifications Authority	09
R&D capabilities	11
Production management system	12
Manufacturing capabilities	13

02

CLEANROOM SYSTEM	20
Cleanroom System Solution	20
Cleanroom Panel	22
Bidure®	26
Bidureu ®	28
Stainless steel waterproof wall base	30
One piece corner	32
Removable panel	33
Air return wall unit	34
Cleanroom door	36
Cleanroom window	38
Cleanroom panel installation instructions	40
Professional service	42
Intelligent design	43
Intelligent delivery	43

03

COOPERATIVE PARTNER	44
Project cases	46
Cooperative partner	54



FACADE SYSTEMS



ROOF SYSTEMS



FLOOR SYSTEMS



STEEL STRUCTURE



CLEANROOM SYSTEMS



COLD STORAGE SYSTEMS



MODULAR HOUSING

BERBSON GROUP

Bersbon Group was established in 1978 and is headquartered in Shandong. The group is a comprehensive modern private enterprise integrating R&D with production, engineering and technical services, warehousing and processing and capital operation. It has more than 20 branches and offices with more than 2,000 employees. At present, the Bersbon group's business covers five core industrial sectors: clean room enclosure system, R&D, production and engineering services of fabricated building steel products, high-end coated steel plate distribution services, high-precision cold-rolled steel plate manufacturing and integrated housing (modular box-type housing).

With more than 40 years of deep cultivation in the industry, Bersbon Group has built three manufacturing bases in Shandong and Jiangsu, with a total area of more than 760,000 square meters. Among them, the latest digital factory benchmark project invested by the Group - Bersbon Yangtze River Delta Manufacturing Base (Jiangsu Zhenjiang) will be completed and put into production in 2021. Bersbon's products and services are well-known at home and abroad. The products are widely used in industrial manufacturing, medical and pharmaceutical, logistics and warehousing, modern agriculture, public buildings, transportation and commercial facilities, etc., contributing unique value to the progress and development of various industries.

Under the background of carbon neutrality and carbon peaking and the trend of digital development, Bersbon Group will actively move towards high-end intelligent manufacturing and digital industrial upgrading, in order to fulfill the corporate mission of "lasting beauty in buildings and creating a better life".

3

Three major production bases

760,000+

SHANDONG FACTORY : 760,000m

30+

30+ branches

2200+

2200+ Propositional employees

115+

More than 115 national patents

2 billion USD

Annual turnover over 2 billion USD



Shandong manufacturing base

The group headquarters and manufacturing base are located in Boxing Economic Development Zone, Binzhou City, Shandong Province, covering an area of more than 1,000 mu. The production lines of clean panels, clean doors and windows, sandwich insulation panels, curtain wall panels, profiled panels and cold storage panels that have been completed and put into production use industry-leading equipment, technology and production management.

BERBSON CLEANROOM

Shandong Liqiang Metal Technology Co., LTD (hereinafter referred to as Berbson Cleanroom) is a subsidiary established by Berbson to develop the cleanroom industry market, focusing on the research and development and manufacturing of cleanroom enclosure systems, and the research and development, manufacturing, sales and consulting of medical clean doors and windows and related products. Relying on Berbson's more than 40 years of industry R&D experience and resource integration advantages, it has become a professional clean room enclosure system service provider, an advocate and practitioner of modular clean rooms, and a clean board intelligent producer with the largest production capacity in China.

It has the world's first cleanroom panel production line with independent intellectual property rights and the world's leading automated production equipment for clean medical doors and Berbson. It has a complete product system and rich product categories, including clean panels, clean medical doors, clean windows and other products. Has passed FM, CE, SGS, ISO9001, ISO14001 certification one after another.

Serving many large-scale system engineering enterprises at home and abroad, and occupying a leading edge in the fields of biomedical, food, electronics and medical industries; we have provided professional clean enclosure solutions to famous companies globally.

2

2 intelligent manufacturing bases

4

Global automated production lines (Shandong/Jiangsu),
non-standard flexible production lines

5,000,000+

Cleanroom panel annual capacity: 5,000,000 square meters

15000

Doors and windows monthly capacity: 15,000 pieces



Jiangsu manufacturing base

Located in Zhenjiang Economic Development Zone, it covers an area of 150 acres and a building area of 100,000 square meters, including production lines for clean boards and sandwich insulation boards. The digital benchmark factory jointly built by Jiangsu Base Office MasterCard and Siemens is also a benchmark in the building enclosure industry, and is of great significance to promoting intelligent manufacturing in the clean industry.

9 GLOBAL LAYOUT

Over the years, Berbson has always been committed to creating value-added biopharmaceutical clean room containment system solutions for customers. The products have obtained national standards, CE, FM approval, and are exported to more than 20 countries in Asia, Europe, Africa and South America.

In China, Berbson's sales and service network covers the whole country, branches and offices are located in 23 cities in 14 provinces, and professional manufacturing facilities are established in Boxing, Shandong and Zhenjiang, Jiangsu. And R & D base to meet the domestic market fast and effective supply response.



EXPERT TEAM



Engineering Technician



Intermediate Technical Engineer



Senior Technical Engineer



Sales Service Team

AUTHORITATIVE QUALIFICATION



R&D CAPABILITIES

The building of Berbson Innovation Center consists of a large-scale comprehensive R&D test field and a 4-story scientific research building with a total area of 5000m². It is a comprehensive building integrating R&D experiments and office functions. It is equipped with more than 40 sets of professional equipment and can realize 32 experiments such as architectural physics and organic chemistry. Structural mechanics, clean space, etc., is one of the most authoritative and complete laboratories in the industry; Established strategic partnership with Baosteel, Yehui, BlueScope, Maanshan Iron and Steel, BASF and many other high-end brand suppliers, and set up joint innovation laboratory; Provides complete testing and testing conditions for the development of high-quality building products. Obtained professional certification from China Construction Metal Structure Association.

Metal material detection

Coating flexibility
Tensile strength
Coating thickness
Plating thickness
Color difference detection
Pencil Hardness
Coating Adhesion
Salt spray resistance, acid and alkali resistance
UV lamp aging performance

Auxiliary material detection

Rock wool density
Thermal Conductivity
Compressive strength
Oxygen Index
Smoke density
Hydrophobicity

Product inspection

Bond strength
Peel properties
Bending capacity

Solution detection

Moisture content
Bond strength

- One of the most authoritative and complete laboratories in the industry.
- Equipped with more than 40 sets of professional equipment.
- Testing materials up to 32 items.
- Establish strategic partnership with more than 20 high-end brand suppliers.



PRODUCTION MANAGEMENT SYSTEM

LEAN MANAGEMENT MODEL

With the continuous expansion of the scale of the enterprise the company introduced and implemented TPM in 2007 to create a factory management system and management method with replicable capabilities, which greatly improved the modern management level of the enterprise.

According to incomplete statistics, since the company implemented TPM management, the product qualifica-

tion rate has increased from the initial 95% to 99%, and 19,127 cases have been improved, creating or saving economic benefits accumulatively of about 31 million yuan. The company has become a benchmark enterprise for factory construction in the region. Many enterprises in and outside the province have come to visit and study, and have undertaken many factory management training courses, which have won more honors and recognition for the company.

2007

Introduced and implemented TPM (total production and maintenance) management in 2007

99%

The product qualification rate has been increased from the initial 95% to 99%

19,127

19127 improvement cases in total

5,166,666.66

19127 improvement cases in total

LEAN MANAGEMENT MODEL

In recent years, the company has continuously promoted the extension of quality management to the whole supply chain and the whole product life cycle by strengthening the quality management system certification. Up to now, the company has passed the certification of 1509001:2015 international quality management body ^15014001:2015 international environmental management system and gb/t45001-2020 occupational health and safety management system.

The company has obtained American FM certification (certificate for entering the global market), indicating

that the products or services have passed the testing of the highest American and international standards. The company has obtained the EU CE certification, which indicates that the product or service has passed the compliance assessment and certification in the fields of quality, health and safety, environment and social responsibility.

At the same time, the company also took the lead in obtaining the production license and QS quality safety mark issued by the State Bureau of quality and technical supervision in the same industry in China.



Passed ISO9001:2015 international quality management system



Passed 15014001:2015 international environmental management system



Passed GB/T45001-2020 occupational health and safety management system certification



Obtain production license and QS quality safety mark

AUTOMATIC PRODUCTION LINES FOR CONVENTIONAL PRODUCTS

AUTOMATIC PRODUCTION UINEFORCONV ENTIONAL PRODUCTS

The clean board continuous production system independently developed by Berbson has reached the international advanced level, with a total length of more than 150 meters. It includes: radial press forming system, automatic cotton continuation system, automatic glue spraying system, double track shaping and temperature control system, robot stacking system, control system, etc.

The system has a high degree of automation, fast processing efficiency and stable product quality. The maximum annual production capacity reached 2million years ago. It can produce a variety of core material clean boards. The birth of the automatic production line of clean board has subverted the industry's understanding of the traditional production process of clean board.

150

The total length is more than 150 meters

2,000,000

The maximum production capacity reaches 2million square meters per year



MANUFACTURING PROCESS

01

Automatic cotton continuation system

The independently developed cotton board slitting equipment is cut by high-precision saw blade, and the thickness error is controlled within 200 μ m (the diameter of a hair wire is 80 μ m). The rock wool is staggered, which greatly improves the strength of the clean board.

02

Radial press forming system

Cap press forming system and synchronous operation of multiple motors ensure that the panel forming accuracy is controlled within 0.5mm. The panel processing width and thickness can be automatically adjusted according to customer requirements.

03

Automatic glue spraying system

The frequency converter control ensures that the glue is accurately fed according to the proportion, and is completely and evenly attached to the plate surface, ensuring the high-strength bonding of the product.

04

Double track qualitative and temperature control system

The combination of double track circulating hot pressing process makes the clean plate evenly heated and perpendicular to the four sides to ensure the plate seam accuracy after installation.

05

Robot palletizing system

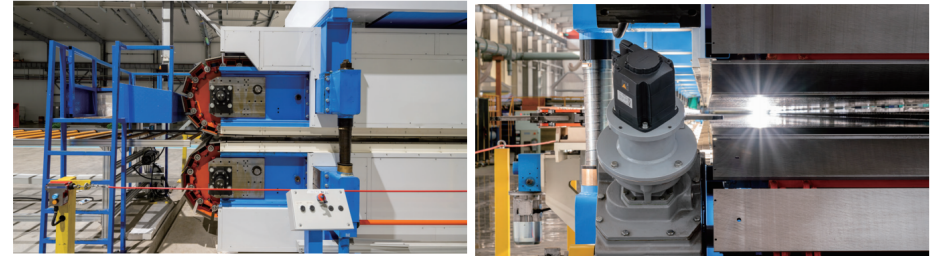
The fully automated robot is used for stacking at a faster speed, which is more efficient. Through accurate measurement and intelligent control, the precision, strength and flatness of the clean plate are greatly improved.

DOUBLE TRACK CYCLIC HOT PRESSING

It adopts the high-end imported equipment from robor, Italy. The double track is equipped with a solid steel structure frame, which is heat treated to ensure the dimensional stability during production. The super long double track ensures the flatness of the product. The heating is carried out by two complete independent systems, and the upper and lower tracks are sealed with heat shields to ensure that the production process reaches the required temperature. In order to avoid deflection deformation, a fixed base is equipped every 2.5 meters.

Characteristic:

1. Advanced design for long-term and large-scale intensified operation
2. Outstanding manufacturing accuracy
3. Precise and unique assembly materials
4. Excellent synchronous operation
5. Ultra long stable operation
6. Control system matching digital management



Flexible automatic production line

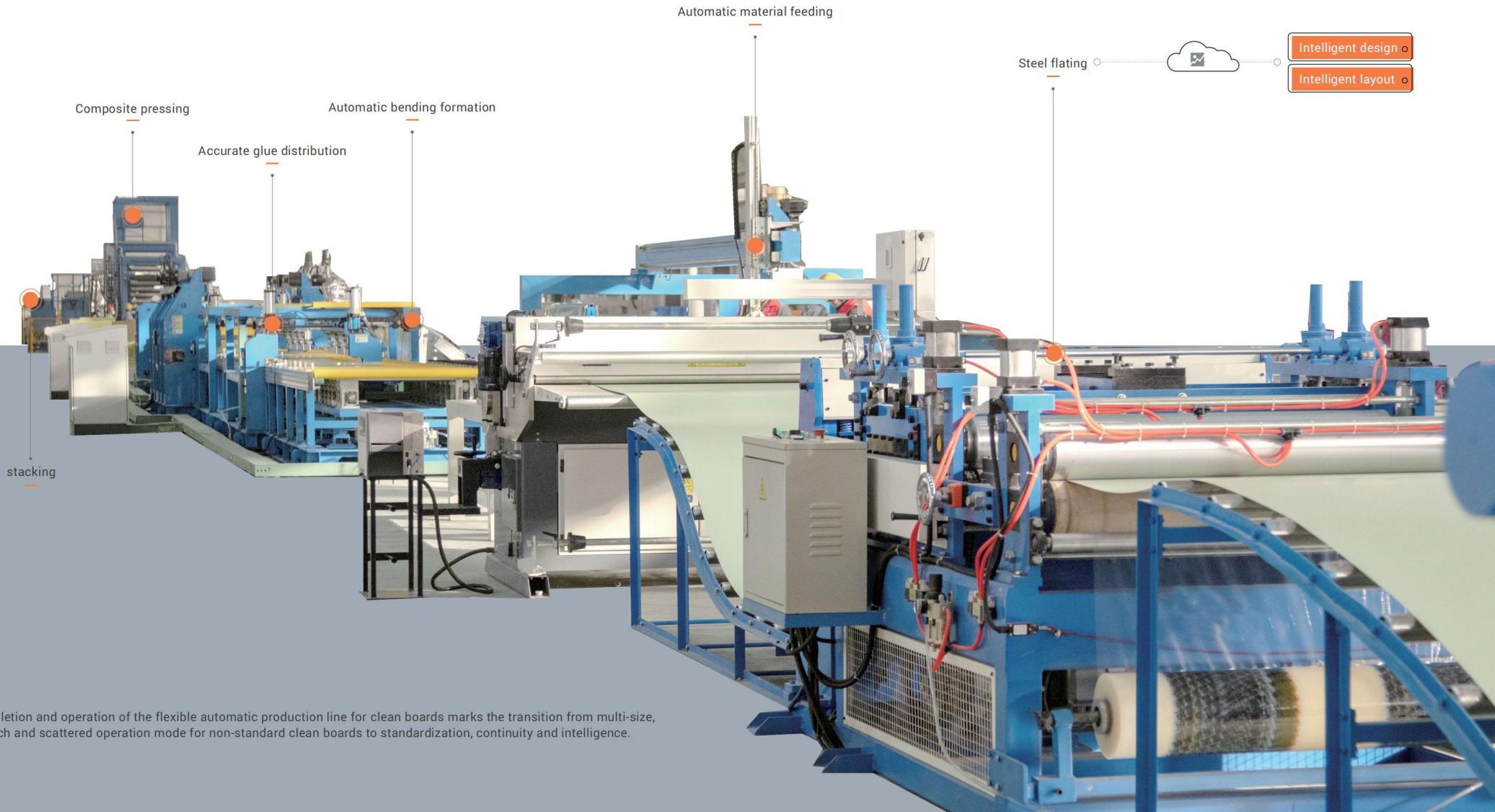
Berbson intelligent automatic production line is composed of 8 modules: steel plate leveling, intelligent design, intelligent layout, automatic laying-off, automatic bending & forming, precisely glue distribution, composite pressing and finished product stacking, with a total length of more than 170 meters.

In the whole production process, there is no need for manual calculation, measurement and operation adjustment. The whole process of automatic production subverts the non-standard traditional production process, improves the material utilization rate, reduces manual input, greatly improves the precision, strength, flatness and aesthetics of the cleanroom panel, and makes the product quality more stable.

8
Full process automation
of 8 major functions

2000
Clean board production
capacity 2000m²/ day

170+
The total length is more than
170 meters



The completion and operation of the flexible automatic production line for clean boards marks the transition from multi-size, small batch and scattered operation mode for non-standard clean boards to standardization, continuity and intelligence.

DYNAMIC PRODUCTION LINE

Cleanroom Door Automation production line



Numerical control tower



Fiber-optic laser output



Internal swing type double-head cutting



Independent electric heating medium circulation



On-site foaming molding

Cleanroom Window Automation production line



The whole production line is composed of composite and glue modules' full automatic production, subvert the traditional clean window production process, improve material utilization rate, reduce manual input, and greatly improve the accuracy, air tightness and beauty of clean window. Faster processing speed, higher product quality. Leading the domestic clean vision, window production industry model.



Improve material utilization



Faster processing



Clean the window accuracy is improved



The quality of the product is higher

BIOMEDICAL CLEANROOM SYSTEM SOLUTION

Berbson continues to explore new materials, new technologies and new solutions to provide customers with overall solutions for the clean room enclosure system in the biomedical industry, covering partition walls, ceiling and doors.window.Profile, etc., we use the spirit of craftsmanship to polish products, the courage to technical innovation, just to better let customers worry, rest assured and glory.



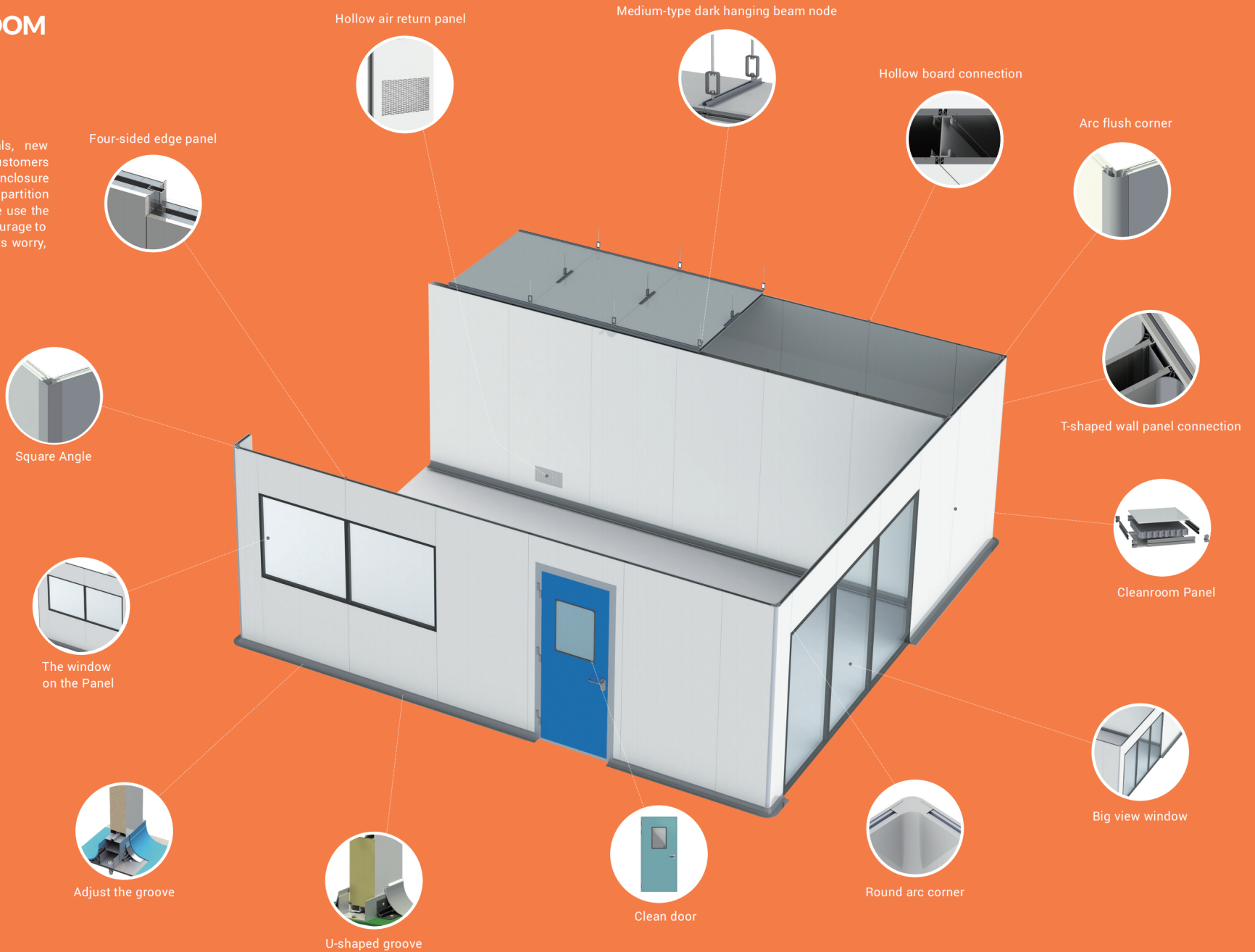
Can provide customized or modular envelope design, intelligent design to complete the facade paper and 3D design scheme, to achieve accurate structure construction Scheme to reduce indoor cracks and leakage risk.



Good at the use of different material characteristics, designed for customers to meet the style needs of the whole factory extension scheme, industrial aesthetics to make the production process environment more friendly.



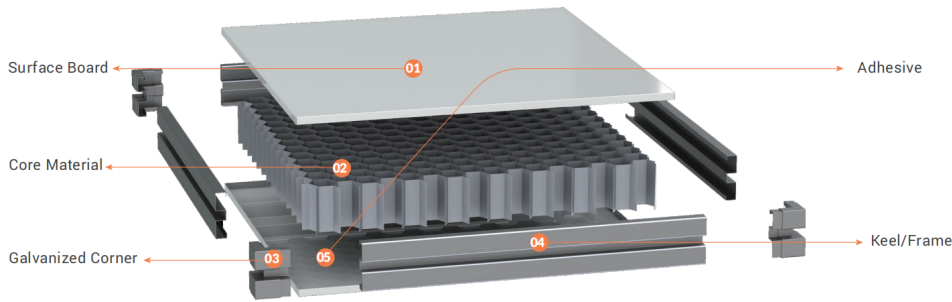
With the process equipment and user habits for reasonable optimization, to maximize the practical operation of users.



CLEANROOM PANEL

Clean Panel, also known as purification Panel, by color coated steel plate, aluminum alloy Panel and other materials as panels, with rock wool, gypsum Panel, glass magnesium Panel, aluminum honeycomb and other core material composite, product performance is excellent suitable for all kinds of indoor environment requirements of harsh clean room engineering, is an ideal clean room envelope material.

Berbson clean Panel selects high-quality raw materials, high-level design scheme ensures the excellent functional characteristics and quality of products, better meet the personalized needs of customers, high strength, excellent fire performance, convenient installation and smooth appearance.



PRODUCT FEATURES

01. Beautiful appearance

Flat surface, fine structure, for customers to create a beautiful, Comfortable working environment.

03. Prefabrication

Modular construction, can be assembled, improve the construction efficiency, reduce the artificial influence.

4
FEATURE

02. Excellent performance

Unique dust-proof, anti-static, antibacterial, sound absorption, sound insulation, fire prevention and bending resistance bearing capacity performance.

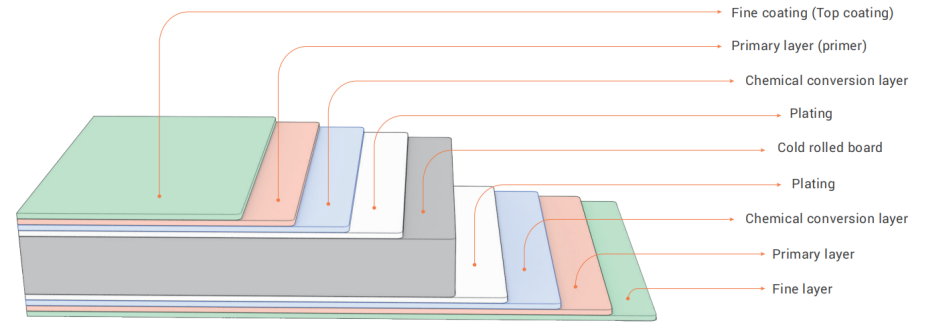
04. Personalized customization

Production can be customized according to the different needs of customers.

SURFACE MATERIAL

Color coated steel plate

To create practical and visual biological pharmaceutical cleanroom, Berbson adopts domestic high quality color coated steel plate, the color coated plate to cold rolled steel plate (galvanized plate, hot galvanized plate or aluminum zinc plate) as the substrate, after degreasing, phosphorization, Ming acid, after treatment of continuous organic coating, after baking and cooling of the plate. High strength, good corrosion resistance and beautiful appearance.



STAINLESS STEEL PLATE

The stainless steel plate is an iron-based alloy steel containing more than 12% chromium content. Stainless steel in a narrow sense refers to steel that is not easy to rust in the atmosphere, and stainless steel in a broad sense refers to steel that is resistant to corrosion in acid, alkali and salt under specific conditions. Berbson uses stainless steel with a thickness of 0.5/0.6mm, a width of 1000/1200mm, a surface material of 304/2B, a frosted front, and a color-coated back, which has chemical resistance and lower gloss. The design is more beautiful.

CORE MATERIAL

High quality water rock cotton

The high quality rock cotton used by Berbson is high quality basalt, dolomite as the main raw materials, the melting temperature can reach 1000°Q fiber fine ratio after special waterproof treatment, not moisture absorption, water hate, water hate rate N98%, fire and moisture proof, laid an important foundation for the durability of biopharmaceutical clean room building.



ADHESIVE

High quality water rock cotton

Our selected adhesive is certified by SGS standard conforming to European EN71 Part3 Environmental standard two-component polyurethane glue, baked at -20°C to 60°C for 12 hours with 100 repeated cycles and no decline in glue bond strength. An average of 30%.

Two-component polyurethane adhesive belongs to recurrent adhesive. The two components solidify and bond, which can meet the requirements of structural adhesive. The dosage of the two components can be adjusted within a certain range, the formula is flexible, and can be combined with the product bond strength demand ratio.



CLEANROOM PANEL

The company provides and develops a series of materials for clean room buildings. The series solutions include rock wool clean Panel, boamesite cotton clean Panel, gypsum rock wool clean Panel, aluminum honeycomb clean Panel and paper honeycomb clean Panel. And for the biological medicine series launched Endure and HigySteel two series. Provide more options for customers.



- 01. Rockwool cleanroom panel
- 02. MGO&Rockwool cleanroom panel
- 03. Gypsum&Rockwool cleanroom panel
- 04. Aluminium honeycomb cleanroom panel
- 05. Paper honeycomb cleanroom panel

PRODUCT SPECIFICATIONS

Item	Specification parameters (mm)
Width	980/1,180
length	Wall panels 100-9,000, and ceiling panels 100-3,500
Thickness	50/75/100
Panel thickness	0.4-0.6
Panel material	Color-coated steel plate, aluminum alloy plate, stainless
Face coat	PE (polyester), PVDF (fluorocarbon), HDP (high weather)
Core material	Rock wool (bulk capacity: 100-120kg / m ³) Glass and magnesium, gypsum,
Thickness of keel	0.6-0.8
Corner	0.5 (Galvanized)
Resist film	60μm / 80μm

Note: Non-standard specifications can be customized according to customer requirements.

SURFACE MATERIAL

Item	Rock wool core plate	Magnesium rock wool core plate	Plaster rock wool core plate	Aluminum honeycomb core
Plate weight	15-16kg/m ³	17-23 kg/ m ³	-	10-15kg/ m ³
Core material	100-120kg/m ³	5mm	9.5mm	-
Sound transmission loss	25db	30db	30db	18db
Bend	1.1KN/m ²	1.25KN/m ²	1.25KN/m ²	1.0KN/m ²
Coefficient	-	1.033	-	-
Hydrophobic rate	≥98%	-	-	-
Fire endurance	30min	60min	60min	41min

Note: The weight of the plate is calculated by 50mm plate thickness



ENDURE®

Endure is mainly used for biological products, blood products, vaccines, etc., using VHP disinfection, alcohol, new geramide wipe clean room B area, is a special panel for biological clean room.



A special product for VHP disinfection

PRODUCT SPECIFICATIONS

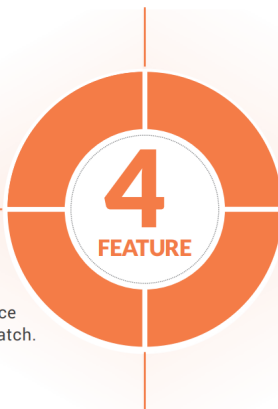
Item	Specification parameters (mm)
Width	1,180
Thickness of surface board	0.55
Zinc content	200g/m ³
Coating thickness	120um
Panel surface material	Hot melt adhesive film

Note: The final interpretation right of all parameters belongs to the technical center.

PRODUCT FEATURES

01. VHP RESISTANT DISINFECTION
It can meet the requirements of VHP space disinfection and surface alcohol wipe disinfection.

03. The wear resistance
In the process of panel transportation, construction, installation and use, reduce wear and tear, and reduce the plate scratch.



02. Good Formability
Meet the steel plate bending processing performance, to ensure that the paint coating is not damaged, prolong the life cycle.

04. Be environmentally friendly
Small color difference, low gloss, reduce visual fatigue caused by glare, improve working efficiency and yield.



HIGYSTEEL®

With the rapid development of the cleanroom industry, higher requirements for materials are put forward. Berbson and Bao-steel group launched a joint laboratory, launched a series of HigySteel coated steel plate for cleanroom space. Customized color palette by Nordic colorist, more matching with white glue color.

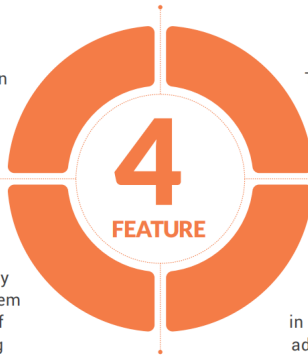


The more suitable color for cleanroom

PRODUCT FEATURES

01. Glossiness reduced by 42.9%
Reduce visual fatigue caused by clean room glare, low gloss surface diffuse reflection, more comfortable vision.

03.
The whiteness of HygiSteel is increased by 4 units, and the color difference control level is increased by 60%, which perfectly solves the problem of visual color difference in the use of standard products commonly existing in white customers.



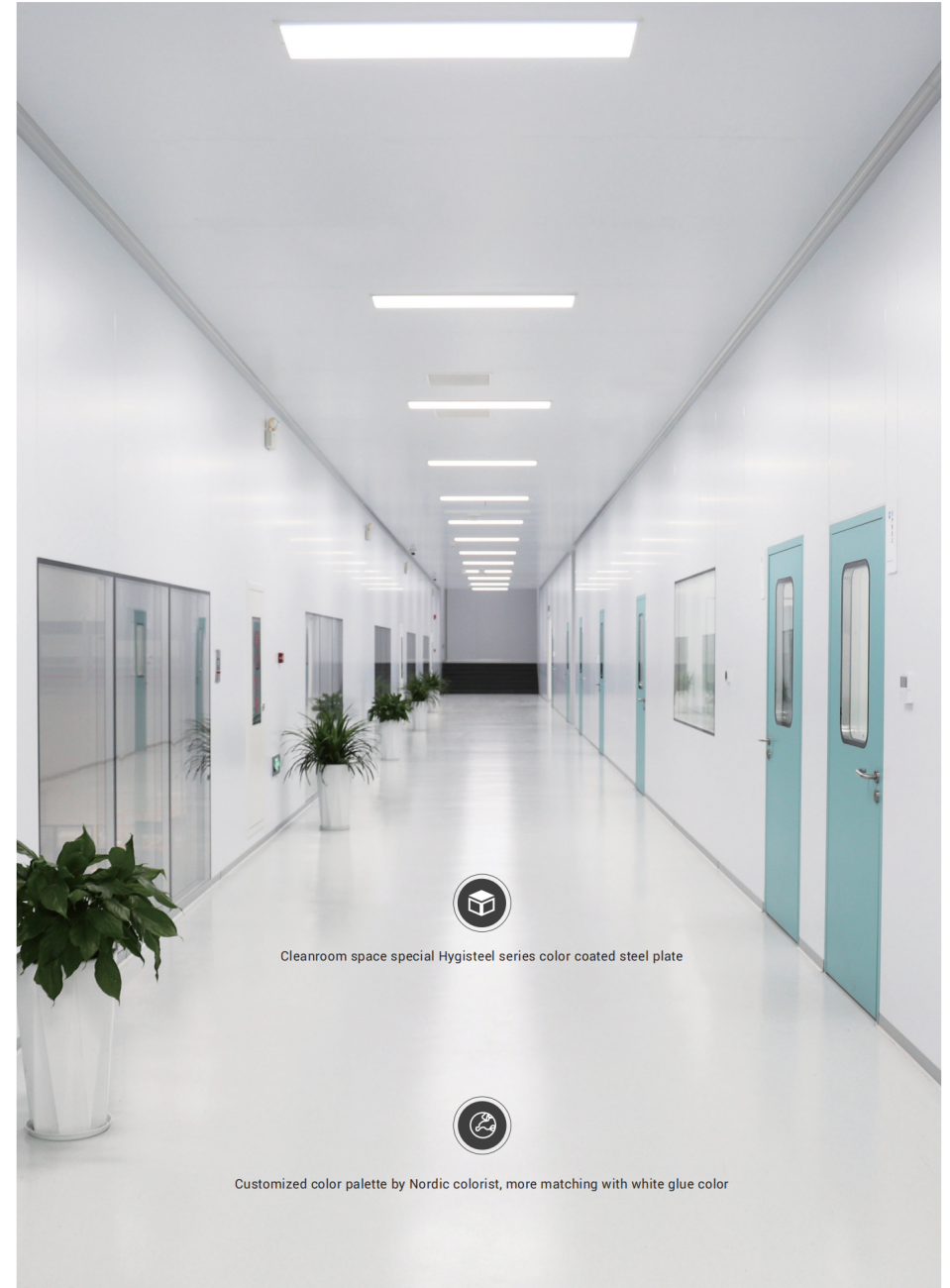
02. Flatness increased by 66.7%
The cleanroom panel adopts sandwich composite production process, which has strict requirements for the flatness of color steel plate.

04. Antiviral activity rate >90%
HygiSteel achieved a breakthrough in color coated steel plate, in the coating added silver ion Ag+ and antiviral factor, antiviral activity rate >99%.

PRODUCT SPECIFICATIONS

Item	Specification parameters (mm)
Width	1,180
Surface plate Thickness	0.5
Zinc content	120/m ²
Surface Coating	PE
Coating thickness	23um
Glossiness	20±5
Panel type	2mm (Maximum wave height 2mm)

Note: Non-standard specifications can be customized according to customer requirements.

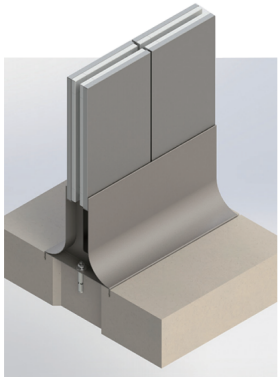


Cleanroom space special Hygisteel series color coated steel plate

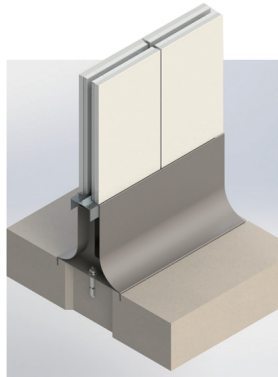


Customized color palette by Nordic colorist, more matching with white glue color

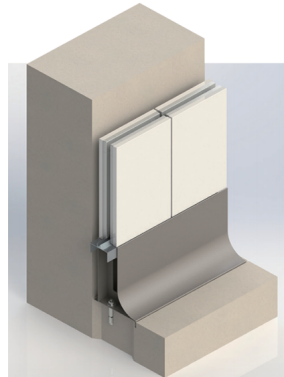
STAINLESS STEEL WATERPROOF WALL BASE



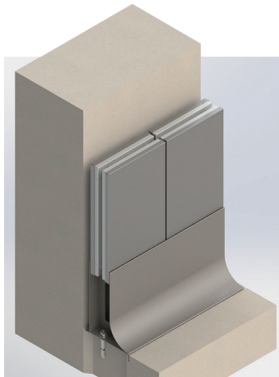
01. Waterproof wall base with stainless steel plate



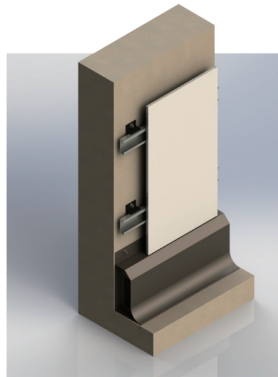
02. Waterproof wall base with color-coated board



03. Waterproof wall base single arc continuous color coated board



04. Waterproof wall base single arc with stainless steel plate



05. Waterproof wall base with hanging board

The stainless steel waterproof wall base is a solution to the problems of waterproof wall base and bacteria breeding in the corner of the food processing area. The stainless steel waterproof wall base is made of 304 stainless steel, which is integrally pressed, welded and polished. It has a good waterproof effect in corners, columns and other areas, and is a new type of waterproof wall-based product.

PRODUCT SPECIFICATIONS / SPECIFICATION MATTERS

Item	Specification parameters (mm)
Appearance height	160
Bottom width	180
Materials	304 stainless steel
Outer stainless steel	1
Middle positioning stiffener	1.5
Ground Slotting	3*15

Note: Non-standard specifications can be customized according to customer requirements.

PRODUCT FEATURES

01. Corrosion of products such as acid and alkali, blood, etc., the product has a long service life. The waterproof effect is good, which greatly reduces the clean board caused by scouring. It is widely used in food processing areas, including scouring, cleaning, disinfection, etc. Problems such as bulging, peeling paint, etc. required place.

02. Stainless steel is strong, grouted inside, no gaps, and clean Great product features.

03. Beautiful and generous, high reusability, the wall panels are tightly combined, without gaps, to prevent the growth of bacteria.

04. Easy and flexible installation.



ONE-PIECE CORNER PANEL



01.
T-shape corner

02.
Right-corner

03.
Round-corner

PRODUCT SPECIFICATIONS

Item	Specification parameters (mm)
Width	The sum of the widths of both sides not exceed 1180 Unilateral not less than 100 suggest equilateral 315*315
Maximum length	6,000
Thickness	50/100
Surface plate thickness	0.4-0.6
Panel surface material	color coated steel plate、Aluminium alloy plate、Stainless steel plate、Ti-Zn plate、Endure、Hygisteel
Surface coating	PE、PVDF、HDP
Core material	Rockwool(Bulk density 100-120 kg/m ³)
Keel thickness	0.6
Corner	0.5(Galvanized)
Protective film	60um/80um

Note: The final interpretation right of all parameters belongs to the technical center.

PRODUCT FEATURES

01. Make the One-piece corner panel, so that the corner position is smooth and flatness, no joint transition, the interface is more rigorous, eliminate air leakage and joint dust accumulation phenomenon, convenient cleaning and disinfection.

4
FEATURE

02. The integrated corner board is specially insulated to effectively avoid the thermal bridge effect common in traditional corners.

03. Combined with Berbson's patented detachable technology, the integrated corner plate can be disassembled separately for daily maintenance, convenient and flexible.

04. The integrated corner board is a patented product of Berbson.

REMOVABLE PANEL

In the process of construction and use of cleanroom panel will inevitably appear local damage and need to be replaced and maintained. In addition, due to the change of process equipment, the layout adjustment of the clean room needs to remove local walls. But the traditional cleanroom panel is difficult to do local disassembly, and the construction party and the owner are often troubled by these problems. Berbson's rapid detachable technology solves this problem.



PRODUCT SPECIFICATIONS

Item	Specification parameters (mm)
Width	980/1,180
Maximum length	Maximum length 9000mm, The ceiling panel not exceed 3000mm
Thickness	50/75/100
Thickness of surface board	0.4-0.6
Core material	Rockwool(Bulk density 100-120 kg/m ³), MGO Board, gypsum board, Aluminium honeycomb, paper honeycomb
Keel/Frame thickness	0.6-0.8
Corner	0.5(Galvanized)

Note: The final interpretation right of all parameters belongs to the technical center.

PRODUCT FEATURES

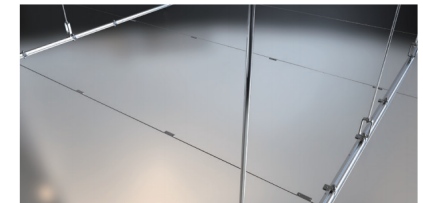
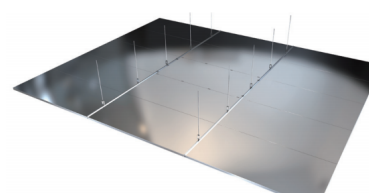
No need to remove all the walls, reduce the cost of replacing the panel, more cost-effective.

This product is more suitable for clean room equipment reserved port and reserved vulnerable places.

No color difference, improve the overall clean room aesthetics.

The technology was granted China national patent in 2-15 years.

REMOVABLE CEILING PANEL



AIR RETURN WALL UNIT

The traditional air return column takes up a lot of space and is not beautiful. Installation is cumbersome.

Bersbon 100mm hollow air return wall panel replaces the return air column and 100-thick hollow spring wall in the buffer room for official clothing and shoes, and the average return air volume is 500m³/h, which improves the use of cleanroom space.

The return air module is prefabricated in the factory, and the direct installation on site is convenient and fast, and the construction efficiency is improved.



PRODUCT SPECIFICATIONS

Item	Specifications (mm)
Width	980/1,180
The maximum length	6,000
Thickness	100
Panel thickness	0.5
Outer plate material	Color-coated steel plate, aluminum magnesium alloy plate, stainless steel plate, zinc zinc
Surface coating	Plate, VCM PE (polycool), PVDF (krypton carbon), HDP (weather-resistant polycool)
Core	Gypsum, aluminum honeycomb
Average return air volume	500m ³ /h
Keel thickness	0.8
Protective film	60um/80um

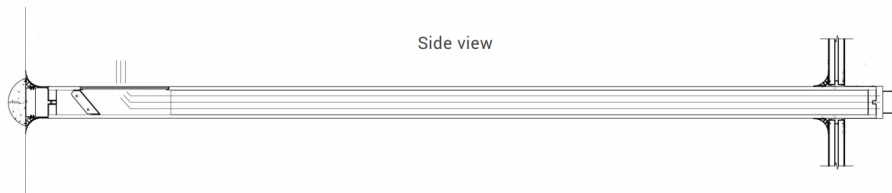
Note: Non-standard specifications can be customized according to customer needs.

INSTALLATION NODE

Vertical view



Side view



Factory prefabricated
Spliced on site easy and
Fast installation



Flush louvers are
More beautiful

CLEANROOM DOOR

Berbson has launched three cleanroom door product series for biomedical solutions: steel door, HPL door, and color steel door.



01. Steel door

02. HPL door

03. Color steel door

STEEL DOOR

PRODUCT FEATURES

- Using high-quality mirror zinc steel plate (304 stainless steel plate), high strength, strong and reliable, anti-corrosion.
- The surface electrostatic resin powder is not sprayed (stainless steel surface is treated with sand), which has strong weather resistance and corrosion resistance.

PRODUCT SPECIFICATIONS

Item	Specifications (mm)
Standard size	Single door 900*2100 1000*2100; Unequal door 1200 *2100; Double door 1500*2100 1800*2100
Door frame steel plate thickness	1.2/1.5
Door leaf steel plate thickness	0.8/1.0/1.2
Door leaf thickness	50
Internal filling	Flame retardant paper honeycomb / aluminum honeycomb / rock wool
Window on Door Edge Color	black White
Window on Door Edge Style	Outer straight inner round/ outer round inner round/ outer straight inner circle

HPL DOOR

PRODUCT FEATURES

- The door leaf surface material is composed of HPL board, which is resistant to bacteria and bacteria, and can withstand frequent disinfection treatment by pharmaceutical factories.
- According to the characteristics of HPL board, Berbson launched the pin edge process to make the HPL board and the aluminum alloy door frame.

PRODUCT SPECIFICATIONS

Item	Specifications (mm)
Door leaf material	HPL board
Melamine board thickness	3/4
Door frame thickness	50
Door leaf thickness	50
Internal filling	Flame retardant paper honeycomb/aluminum honeycomb
Door Window Margin Color	Black/white
Door Window Margin Style	Outer round inner circle

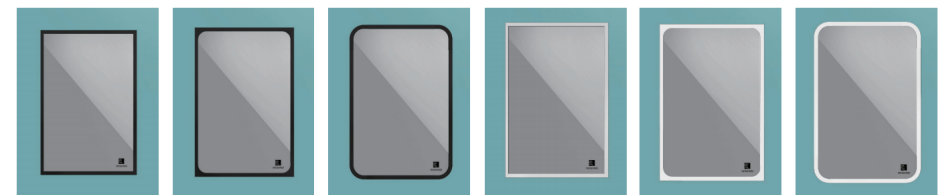
COLOR STEEL DOOR

PRODUCT FEATURES

- The door frame and door leaf are made of high-strength aluminum alloy cutting and splicing corners, with a more refined appearance, improved strength and corrosion resistance.
- The door leaf is made of color steel plate, no holes, no dust accumulation, and clean.

PRODUCT SPECIFICATIONS

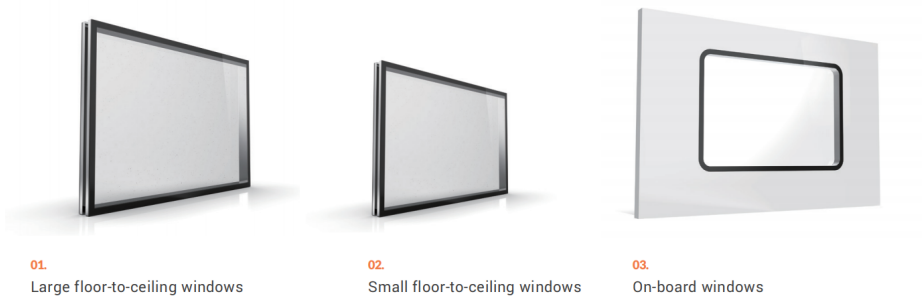
Item	Specifications (mm)
Door leaf material	Color steel plate / mirror zinc plate electrostatic resin powder coating 0.5/0.6
Melamine board thickness	0.5/0.6
Door frame thickness	50
Door leaf thickness	50
Internal filling	Flame retardant paper honeycomb/aluminum honeycomb
Door Window Margin Color	Black White
Door Window Margin Style	Outer straight inner round/ outer round inner round/ outer straight inner circle



Black straight outside Black outer straight inner circle Black outer straight inner circle White straight outside White outer straight inner circle White outer straight inner circle

CLEANROOM WINDOWS

Cleanroom windows are specially launched for the biomedical industry: large floor-to-ceiling windows, small floor-to-ceiling windows, and on-panel windows. It can be customized according to different needs of customers.



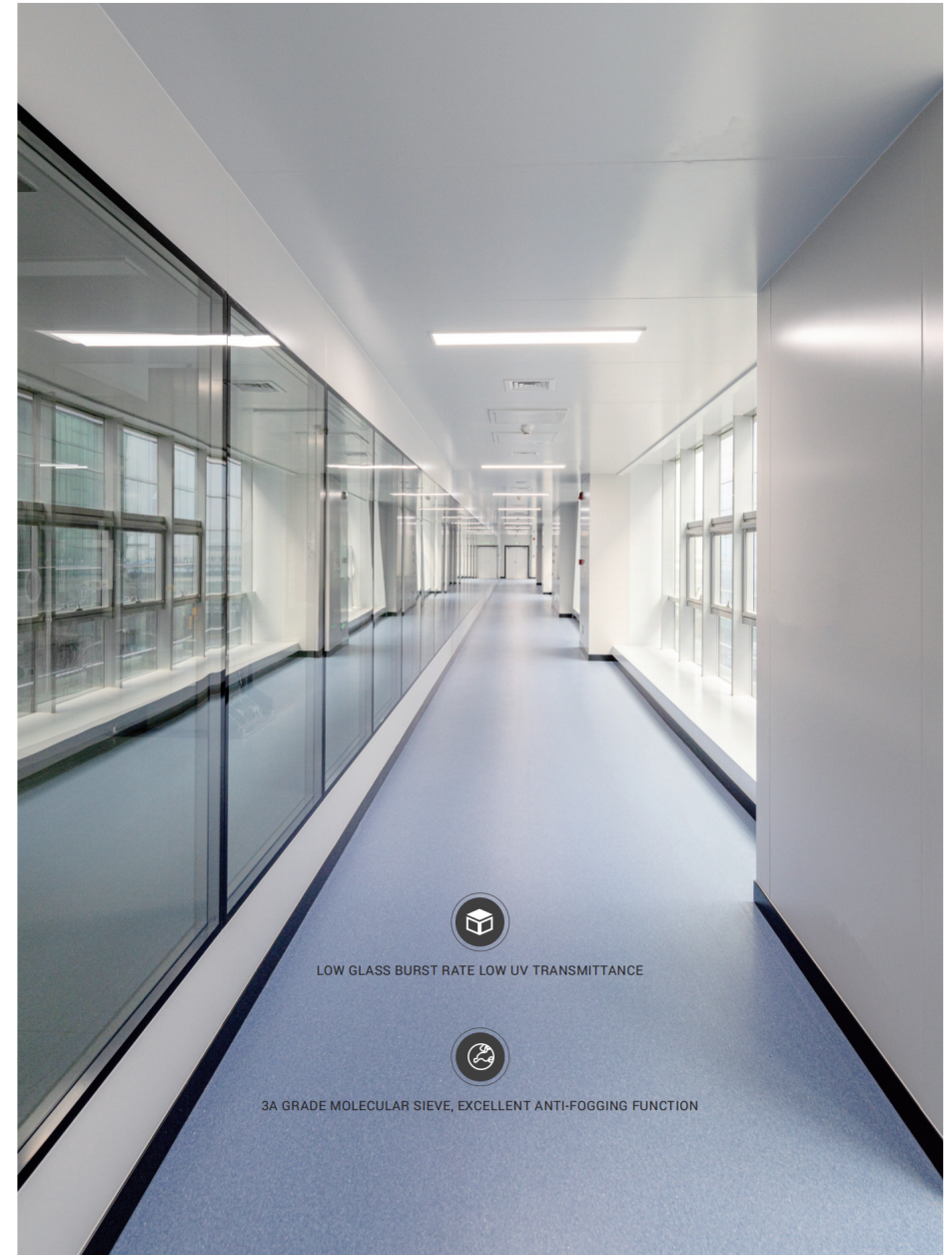
PRODUCT FEATURES



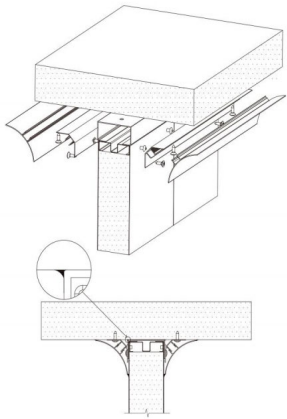
PRODUCT SPECIFICATIONS

Item	Cleanroom window parameters (mm)
Specification	1180x1200,2363x1200
Glass	Tempered glass, ultra-white tempered glass, fireproof glass, dimming glass
Form thickness	50/75/100
Window frame	Aluminum alloy profile / stainless steel
Edging	Outer straight inner straight, outer straight inner circle
Internal filling	3A molecular sieve/inert gas

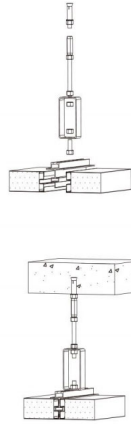
Note: Non-standard specifications can be customized according to customer needs.



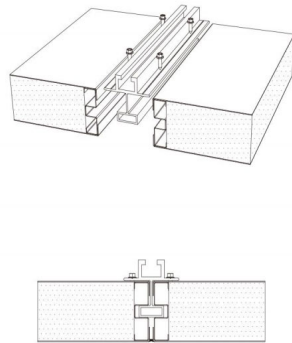
CLEANROOM PANEL INSTALLATION INSTRUCTIONS



Wall to ceiling connection



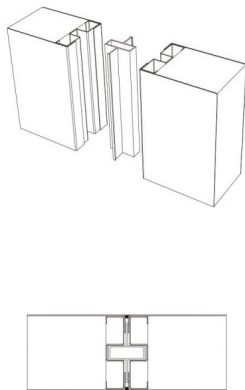
Condole top node



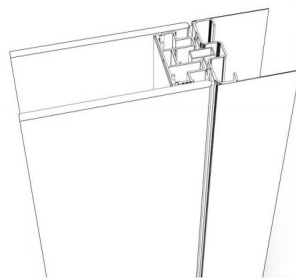
Condole top node1



To track nodes



Wall to wall connection



Wall to window



PROFESSIONAL SERVICE

DESIGN

Analyze the overall design plan of the clean room project, understand the actual needs of customers, optimize the design of the clean room enclosure system, and calculate the product usage and cost.

REACH COOPERATION

MasterCard's optimized design scheme and layout design drawings have been confirmed by the client or the construction party, and relevant business terms have been agreed upon. The two parties signed a supply agreement, and MasterCard was ready to prepare materials for production.

MANUFACTURING

The production order is released according to the progress of the customer's clean room project. The factory arranges production according to the order specification, quantity, technical requirements and delivery time, and realizes seamless quality control in the whole process from raw materials to processing and finished product inspection to ensure stable product quality.

SHIPPING DELIVERY

Cooperating with large domestic logistics companies, the models are complete, and the transportation network covers the whole country. Standardized packaging and loading procedures ensure safe and efficient delivery of products.

CONSTRUCTION GUIDANCE

Equip the project with professional installation guidance engineers to ensure accurate construction and proper installation, and coordinate to solve unexpected problems at the installation construction site.

USE AND MAINTAIN

Equipped with a professional after-sales problem handling center, information registration and filing of completed projects, regular return visits to the usage, and one-to-one efficient handling of problems arising.



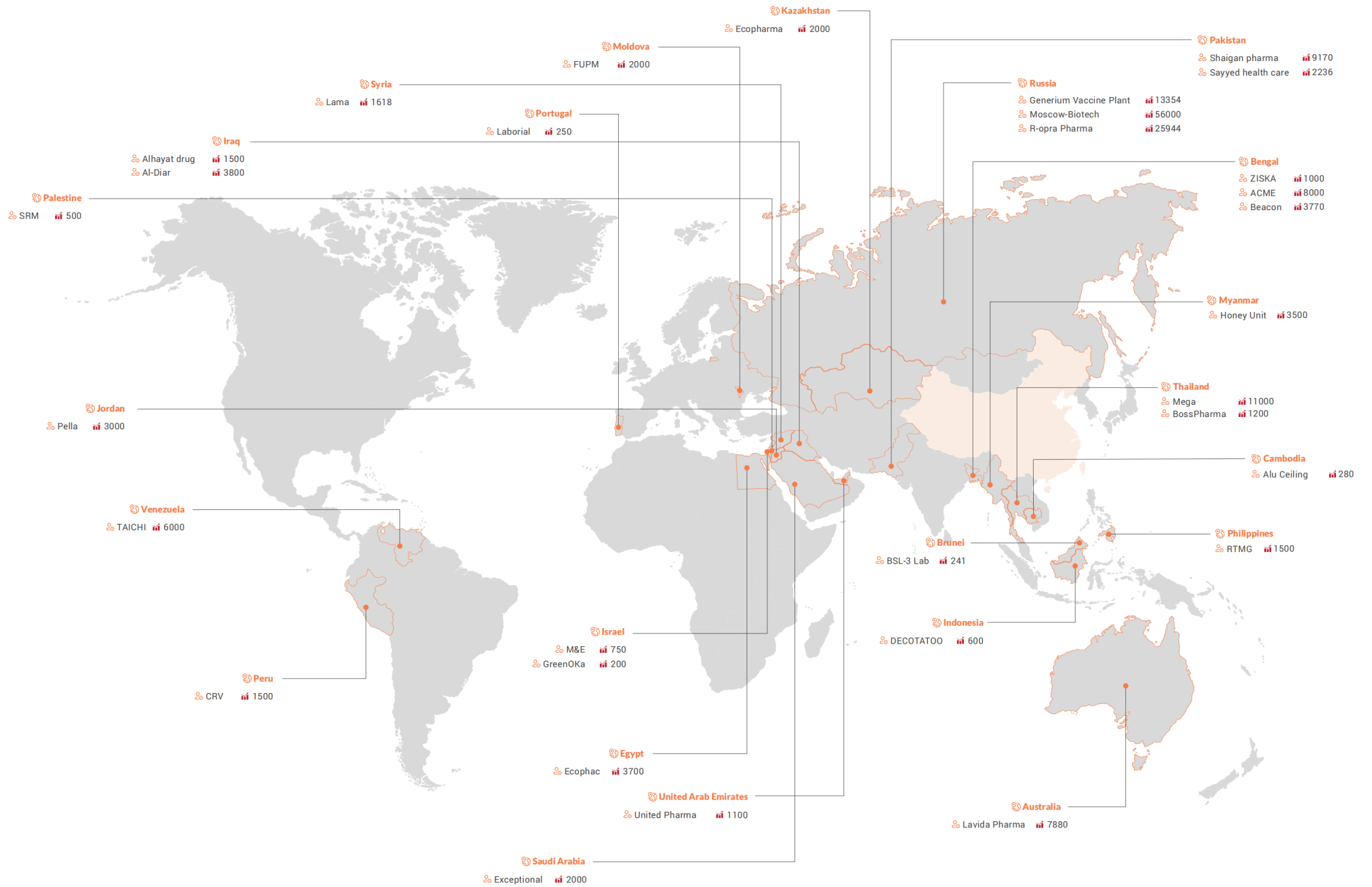
Smart Design

Relying on the analysis of massive engineering layout data in the big data center, MasterCard has a clean space intelligent design system. Intelligent layout, intelligent planning of various functions and areas. At the same time, the clean room color matching system software was launched, according to the user's work nature and environmental needs, with different colors of clean boards, clean doors, clean windows, floors, aluminum profiles, glue, etc. ° 3D effect, intuitive feeling, high accuracy: dynamic adjustment Convenience and fast response, provide good support for better building of clean room enclosure system'

Smart Delivery

Marketing Center: Communicate the customer's front-line needs to the company's contract performance department at the first time: delivery timeliness, contract signing, bill of materials confirmation, production scheduling, tracking production nodes, etc., to provide more efficient delivery capabilities Technology Center: Technology research and development As a service support, according to different environments and needs, intelligent layout, intelligent planning of various functions and areas'

We hope to deliver such a value to customers: quality and professional services are not only services in the cooperation process, but also the empowerment and delivery of solutions that understand customer needs.



MARKET RECOGNITION



CanSino Biologics Inc. ,

Products: cleanroom panel, cleanroom door, cleanroom window

CanSino Biologics Inc. is an innovative biopharmaceutical company dedicated to exploring best solutions to the prevention of diseases through cutting-edge research & development, advanced manufacturing and commercialization of innovative vaccine products for human use worldwide.



MARKET RECOGNITION



Biocytogen

Products: cleanroom panel, cleanroom PVDF steel door, cleanroom window

Biocytogen is an international biotechnology company with innovative technologies driving the development of new drugs.

According to the needs of the use environment, the project adopts the double gypsum rock wool clean board, PVDF clean steel door and clean window produced by Berbson. The surface of the clean steel door is sprayed with PVDF electrostatic resin powder, which is of excellent quality, resistant to VHP disinfection, durable, antibacterial and clean.



MARKET RECOGNITION



CSPC Pharmaceutical Group Limited

Products: cleanroom panel, cleanroom door, cleanroom window, One piece corner

CSPC mainly owns two business segments of finished drugs and bulk drugs, with innovative drugs as the core development strategy. CSPC currently has a strong product portfolio in the therapeutic areas of nervous system disease, oncology, anti-infective and cardiovascular disease.



Based on years of industry experience, Berbson Clean technology designed and produced solutions for this project. The highlights are as follows: There are no arc profiles at the inner corners, and all are right-angle structures. The outer corner positions are all right-angle corner plates. Corridor, great room wall top to seam. Large floor-to-ceiling windows in the hallway. The corridor is double-glazed. No inner corner edge



MARKET RECOGNITION



Shenyang 3S BION INC.,

Products: Endure@cleanroom panel, air return wall

Shenyang 3S BION INC., is a leading biopharmaceutical enterprise integrating R&D, production and sales, dedicated to the research and development of genetically engineered recombinant protein drugs.



Endure@cleanroom panels are resistant to VHP sterilization, have excellent chemical resistance and excellent extensibility, are easy to clean and are safe and environmentally friendly. With the air return wall instead of the air return column, it saves space, is flat and beautiful, and creates a cleaner and safer production space.



OUR PARTNERS



COMMITTED
TO THE
CONVENIENCE
AND THE PRESTIGE OF
OUR CUSTOMERS